

Powergate 10 Networkable Power Control System



PowerGate10™ Features

- ◆ Built-in web server
- ◆ No programming required
- ◆ Password protection
- ◆ Customizable control page
- ◆ Provides simple, web based configuration and control
- ◆ Internet connection with dedicated IP address required
- ◆ Ten relay controls

PowerGate10™ Benefits

- ◆ Return on Investment could be realized with one prevented service call and associated downtime
- ◆ Reduce maintenance costs up to 30% - Dispenser warranty data shows up to 30% of electrical problems are rectified when a service tech recycles power to the dispenser
- ◆ Reduce loss of sales from equipment downtime
- ◆ Remotely access and control from a desktop, laptop, or cell phone with internet access
- ◆ Remotely cycle power to up to 10 circuits including dispensers, LED signs, pumps, etc
- ◆ Retrofit existing sites or integrate in power distribution solutions at new sites



Power Integrity PowerGate			
Dispenser 1	Dispenser RUN	ON/OFF	Recycle
Dispenser 2	Dispenser RUN	ON/OFF	Recycle
Dispenser 3	Dispenser RUN	ON/OFF	Recycle
Dispenser 4	Dispenser RUN	ON/OFF	Recycle
Dispenser 5	Dispenser RUN	ON/OFF	Recycle
Dispenser 6	Dispenser RUN	ON/OFF	Recycle
Dispenser 7	Dispenser RUN	ON/OFF	Recycle
Dispenser 8	Dispenser RUN	ON/OFF	Recycle
Dispenser 9	Dispenser RUN	ON/OFF	Recycle
Dispenser 10	Dispenser RUN	ON/OFF	Recycle

Technical Specifications

I/O: 10 Relays

Relay Contacts:

Contact Arrangement: Form C
 Max Switching Power: 9600VA, 1120W
 Max Switching Voltage: 277VAC, 110VDC
 Max Switching Current: 40A
 Electrical Life @ Rated Load: 100K cycles, typ
 Mechanical Life: 10M cycles, typ

Relay Control Options: On/Off or Pulse

Pulse Timer Duration: 100mS to 1 Day

Monitor/Control:

Web Browser: Standard
 XML or Modbus/TCP: Available as option

Network: 10/100 Base-T Ethernet Port
 Network Setup: Static IP address assignment TCP port selectable

Password Settings:

Password protection on setup page: Yes
 Password protection on control page: Optional

Connectors:

1/4 Inch Tab Connectors



LED Indicators:

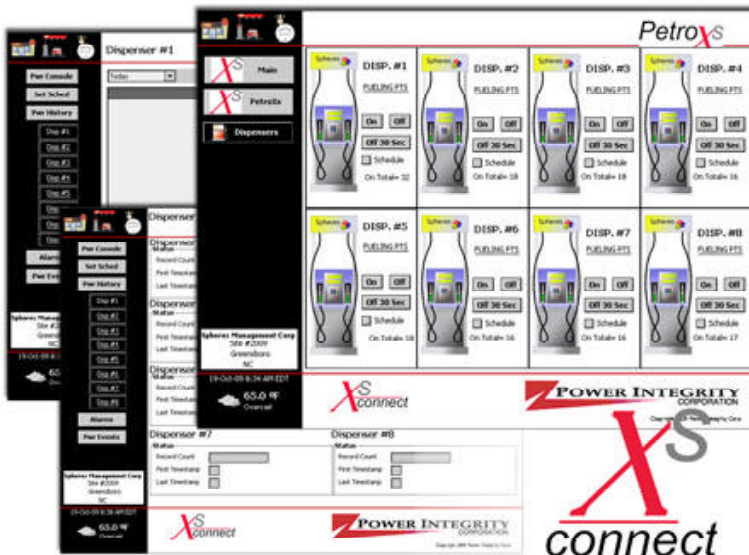
- Module Powered
- Relay Coils Energized 1-10
- Network Linked
- Network Activity

Physical:

Operating Temperature: -40 to 158 F

Transformer Supplied

24V DC
 1.75 VA



When connected to the XS network the capabilities increase. The advanced server provides historical tracking, monitoring and alarming options.

These are in addition to the many other options and features the XS network server provides such as building, HVAC, refrigeration, and power control and monitoring.